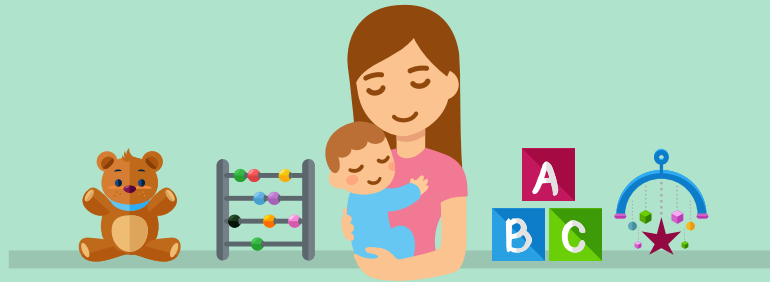


SUDDEN INFANT DEATH SYNDROME

In Suffolk, 12 babies sadly died unexpectedly at home whilst sleeping between October 2019-July 2023. All these babies were healthy and well. Many families affected have similar characteristics. Look out for these characteristics to help prevent future cases.



BOTTLE FED



75% were bottle fed.

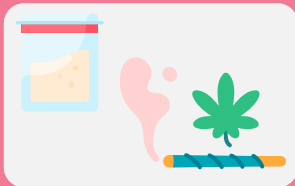
SMOKERS

75% had at least one parent who smoked



RECREATIONAL DRUG USERS

50% of parents were recreational drug users



YOUNG MOTHERS

75% of mothers were under the age of 26.



SOCIAL HOUSING

75% of parents lived in social housing



SAFEGUARDING HISTORY

Over 50% of parents had a safeguarding history



CO-SLEEPING WITH AT LEAST 1 RISK FACTOR

75% of parents shared a bed with their babies and had been identified with at least one known risk factor of SIDS

